

# Protect Your Home with the Ultimate Extended Service Contract

## The Driftwood Advantage Covers

### Structural elements, including:

- ✓ Steel frame
- ✓ Sub-floor
- ✓ Doors
- ✓ Windows
- ✓ Framing
- ✓ Walls
- ✓ Roof structure
- ✓ Ceilings
- ✓ Exterior siding

### Plumbing System, including:

- ✓ Hot and cold water lines
- ✓ Waste pipes
- ✓ Soil pipes and vents
- ✓ Faucets
- ✓ Toilets
- ✓ Sinks
- ✓ Bath tubs
- ✓ Shower stalls
- ✓ Water heater
- ✓ Vent pipe/chimney
- ✓ Connections and joints

### Electrical System, including:

- ✓ Service panel
- ✓ Fuses and circuit breakers
- ✓ Wiring
- ✓ Ceiling and wall receptacles
- ✓ Light fixtures
- ✓ Boxes
- ✓ Switches and outlets

### Central Heating System, including:

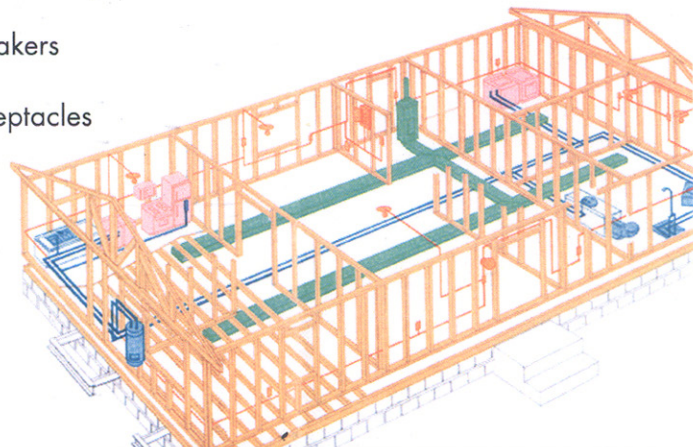
- ✓ Furnace
- ✓ Fireplace/wood-burning stove
- ✓ Blowers
- ✓ Duct work
- ✓ Fuel lines
- ✓ Vent pipe/chimney

### The Central Air Conditioning System, including:

- ✓ Compressor
- ✓ Condenser
- ✓ A-frame

### Most Major Built-in Appliances purchased with the home, including:

- ✓ Washer and dryer
- ✓ Dishwasher
- ✓ Garbage disposal
- ✓ Oven
- ✓ Microwave oven
- ✓ Range
- ✓ Refrigerator
- ✓ Trash compactor



For a complete listing of coverage, conditions and limitations, please consult the Driftwood Advantage plan agreement